

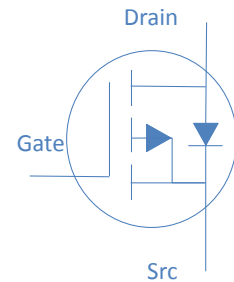
30V P-Ch Power MOSFET
Feature

- ◇ High Speed Power Switching, Logic Level
- ◇ Enhanced Avalanche Ruggedness
- ◇ 100% UIS Tested, 100% Rg Tested
- ◇ Lead Free, Halogen Free

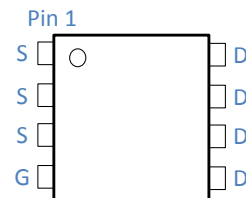
V_{DS}		-30	V
$R_{DS(on),typ}$	$V_{GS}=10V$	3	$m\Omega$
$R_{DS(on),typ}$	$V_{GS}=4.5V$	4.6	$m\Omega$
I_D (Silicon Limited)		-80	A

Application

- ◇ Hard Switching and High Speed Circuit
- ◇ DC/DC in Telecoms and Industrial

DFN5x6


Part Number	Package	Marking
HTN036P03	DFN5*6	TN036P03


Absolute Maximum Ratings at $T_j=25^\circ\text{C}$ (unless otherwise specified)

Parameter	Symbol	Conditions	Value	Unit
Continuous Drain Current (Silicon Limited)	I_D	$T_C=25^\circ\text{C}$	-80	A
		$T_C=100^\circ\text{C}$	-55	
Drain to Source Voltage	V_{DS}	-	-30	V
Gate to Source Voltage	V_{GS}	-	± 20	V
Pulsed Drain Current	I_{DM}	-	-240	A
Avalanche Energy, Single Pulse	E_{AS}	$L=0.1\text{mH}, T_C=25^\circ\text{C}$	180	mJ
Power Dissipation	P_D	$T_C=25^\circ\text{C}$	69	W
Operating and Storage Temperature	T_J, T_{stg}	-	-55 to 150	$^\circ\text{C}$

Absolute Maximum Ratings

Parameter	Symbol	Max	Unit
Thermal Resistance Junction-Ambient	$R_{\theta JA}$	62.5	$^\circ\text{C/W}$
Thermal Resistance Junction-Case	$R_{\theta JC}$	1.8	$^\circ\text{C/W}$

Electrical Characteristics at $T_J=25^{\circ}\text{C}$ (unless otherwise specified)
Static Characteristics

Parameter	Symbol	Conditions	Value			Unit
			min	typ	max	
Drain to Source Breakdown Voltage	$V_{(BR)DSS}$	$V_{GS}=0V, I_D=-250\mu A$	-30	-	-	V
Gate Threshold Voltage	$V_{GS(th)}$	$V_{GS}=V_{DS}, I_D=-250\mu A$	-1.0	-1.5	-3.0	
Zero Gate Voltage Drain Current	I_{DSS}	$V_{GS}=0V, V_{DS}=-24V, T_J=25^{\circ}\text{C}$	-	-	-1	μA
		$V_{GS}=0V, V_{DS}=-20V, T_J=125^{\circ}\text{C}$	-	-	-10	
Gate to Source Leakage Current	I_{GSS}	$V_{GS}=\pm 20V, V_{DS}=0V$	-	-	± 100	nA
Drain to Source on Resistance	$R_{DS(on)}$	$V_{GS}=-10V, I_D=-30A$	-	3.2	3.6	m Ω
		$V_{GS}=-4.5V, I_D=-30A$	-	4.6	5.6	
Transconductance	g_{fs}	$V_{DS}=-5V, I_D=-30A$	-	70	-	S
Gate Resistance	R_G	$V_{GS}=15mV, V_{DS}=0V, f=1MHz$	-	3.4	-	Ω

Dynamic Characteristics

Input Capacitance	C_{iss}	$V_{GS}=0V, V_{DS}=-15V, f=1MHz$	-	6400	-	pF
Output Capacitance	C_{oss}		-	913	-	
Reverse Transfer Capacitance	C_{rss}		-	656	-	
Total Gate Charge	$Q_g(10V)$	$V_{DD}=-15V, I_D=-30A, V_{GS}=-10V$	-	96.5	-	nC
Gate to Source Charge	Q_{gs}		-	24.8	-	
Gate to Drain (Miller) Charge	Q_{gd}		-	13.8	-	
Turn on Delay Time	$t_{d(on)}$	$V_{DD}=-15V, I_D=-1A, V_{GS}=-10V, R_G=2.7\Omega,$	-	15	-	ns
Rise time	t_r		-	20	-	
Turn off Delay Time	$t_{d(off)}$		-	130	-	
Fall Time	t_f		-	55	-	

Reverse Diode Characteristics

Diode Forward Voltage	V_{SD}	$V_{GS}=0V, I_F=-30A$	-		-1.2	V
Reverse Recovery Time	t_{rr}	$I_F=-80A, di_F/dt=100A/\mu s$	-	26	-	ns
Reverse Recovery Charge	Q_{rr}		-	80	-	nC

Fig 1. Typical Output Characteristics

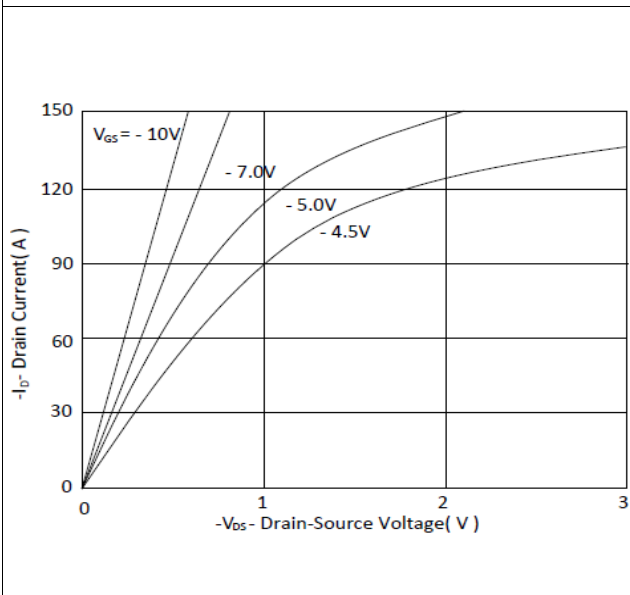


Figure 2. On-Resistance vs. Gate-Source Voltage

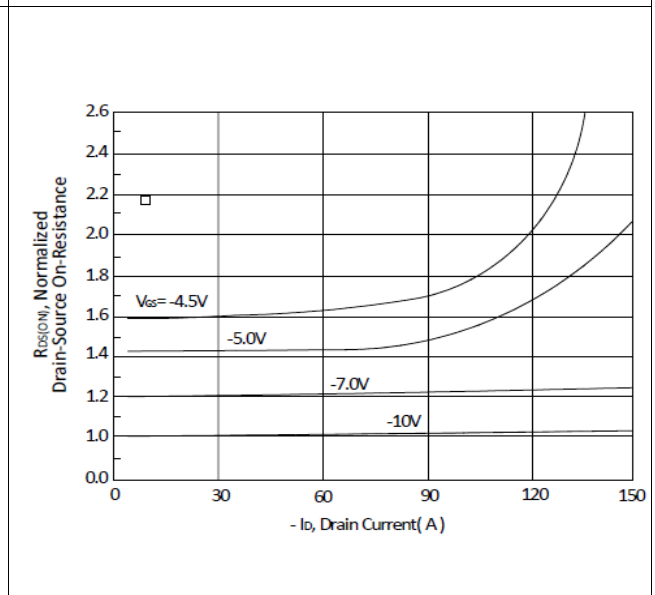


Figure 3. On-Resistance vs. Drain Current and Gate Voltage

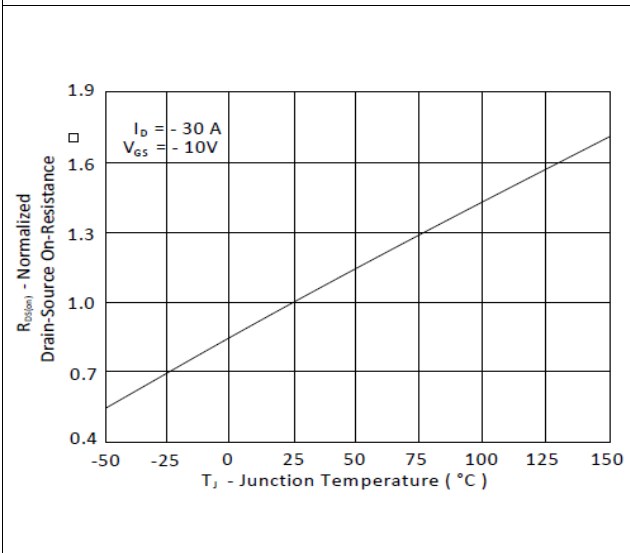


Figure 4. Normalized On-Resistance vs. Junction Temperature

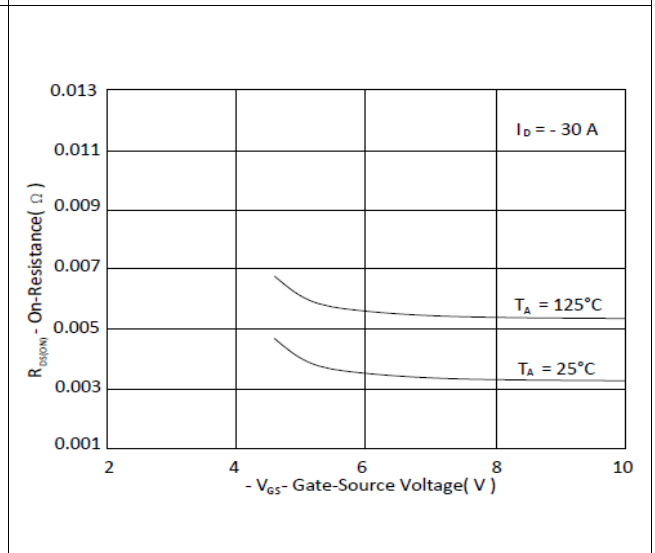


Figure 5. Typical Transfer Characteristics

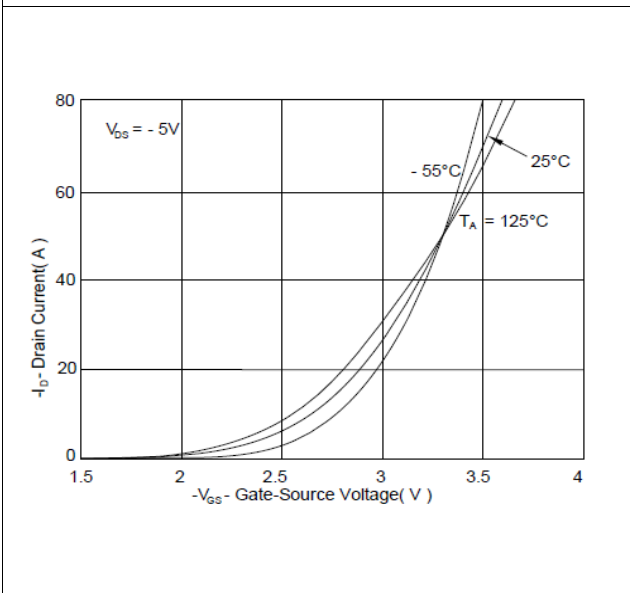


Figure 6. Typical Source-Drain Diode Forward Voltage

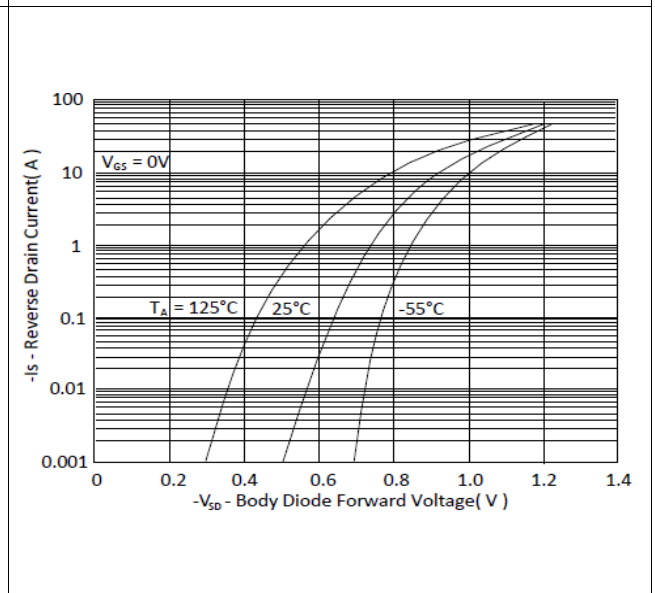


Figure 7. Typical Gate-Charge vs. Gate-to-Source Voltage

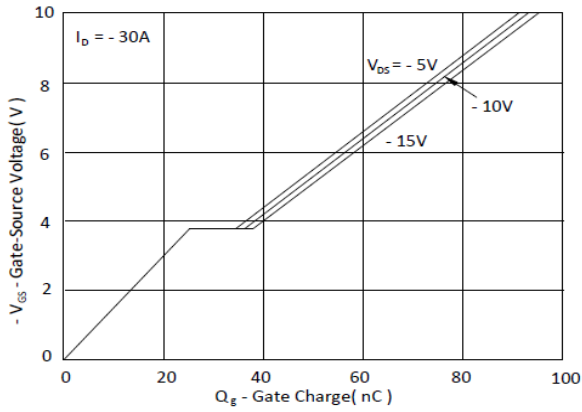


Figure 8. Typical Capacitance vs. Drain-to-Source Voltage

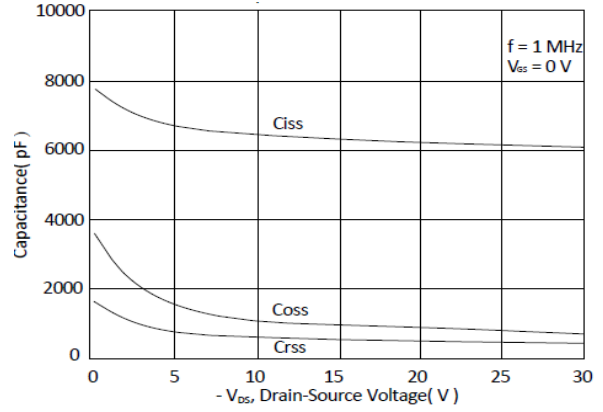


Figure 9. Maximum Safe Operating Area

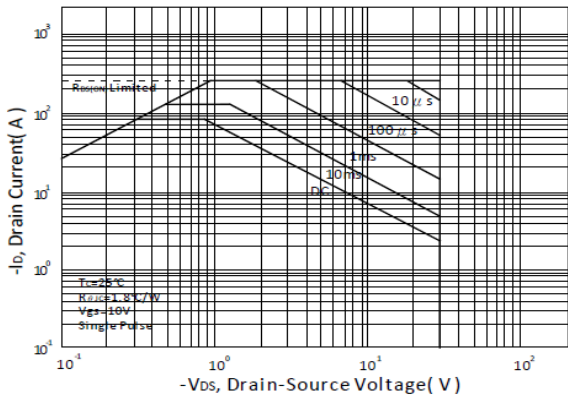


Figure 10. Single Pulse Maximum Power Dissipation

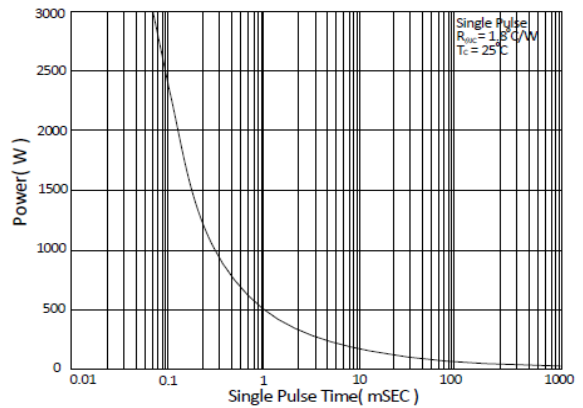
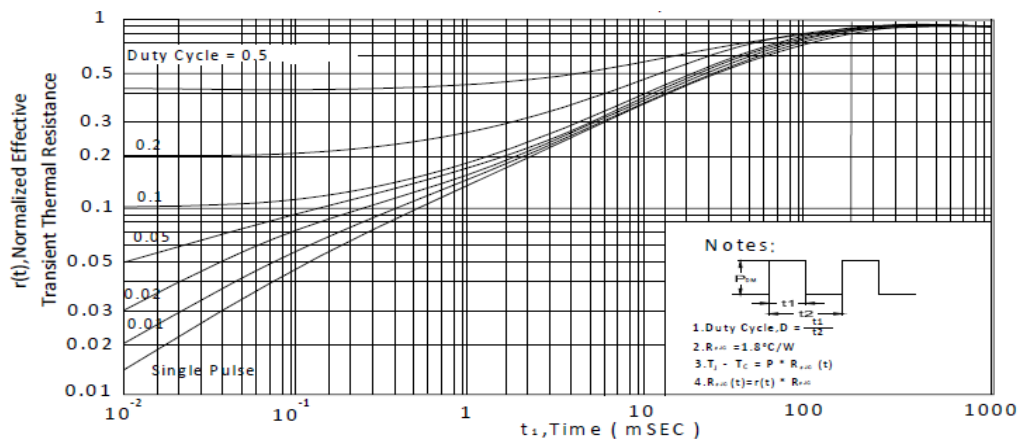
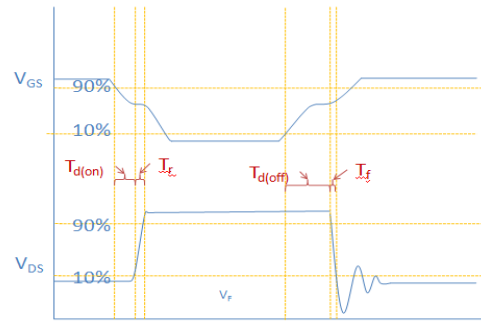
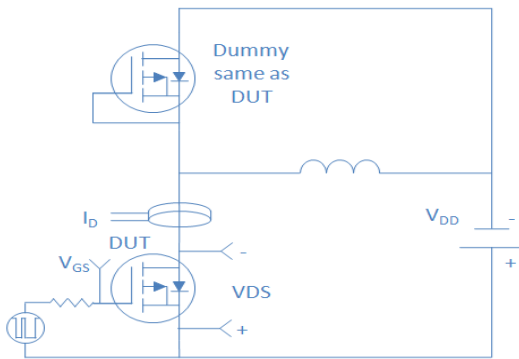


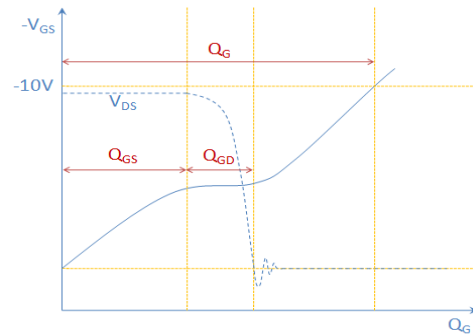
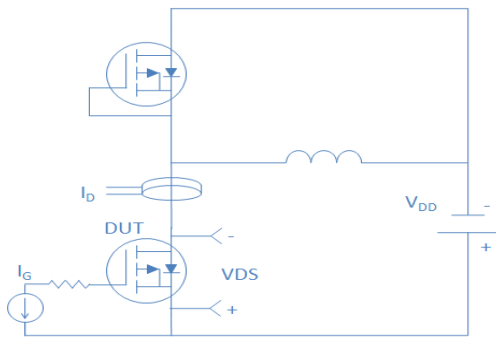
Figure 11. Normalized Maximum Transient Thermal Impedance, Junction-to-Ambient



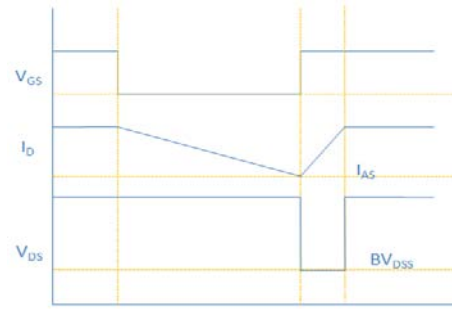
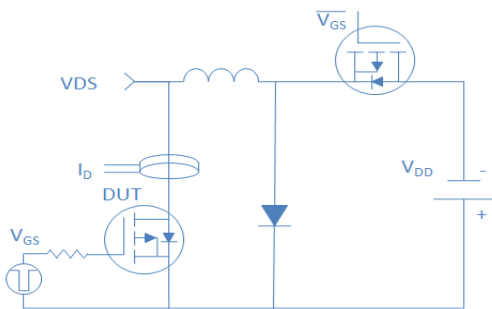
Inductive switching Test



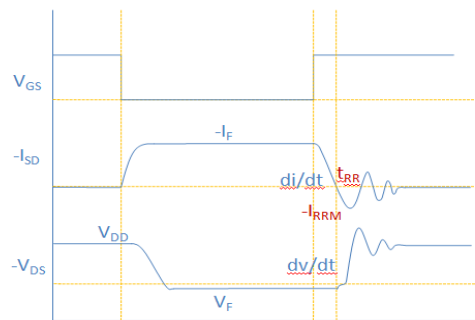
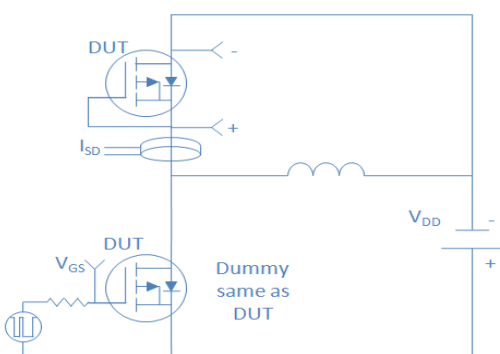
Gate Charge Test



Uclamped Inductive Switching (UIS) Test

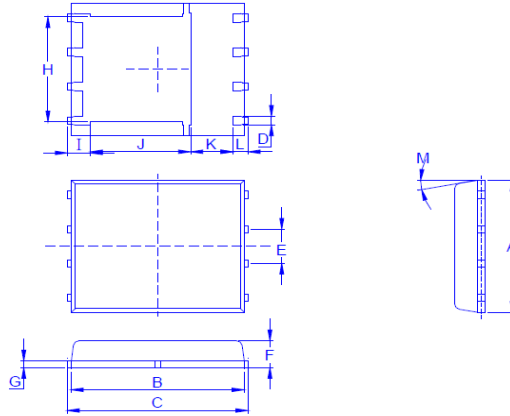


Diode Recovery Test



Package Outline

DFN5x6_P, 8 Leads



Dimension in mm

Dimension	A	B	C	D	E	F	G	H	I	J	K	L	M
Min.	4.80	5.50	5.90	0.3		0.85	0.15	3.67	0.41	3.00	0.94	0.45	0°
Typ.					1.27								
Max.	5.30	5.90	6.15	0.51		1.20	0.30	4.54	0.85	3.92	1.7	0.71	12°